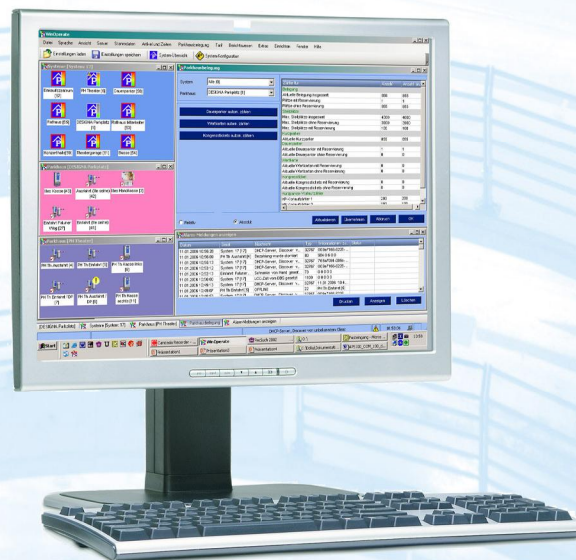


## PM ABACUS APPLICATION

The application WinOperate offers the operator convenient access to all the control functions of the PM ABACUS system and integrates extensive administering and reporting functions.

- MS Windows XP Professional operating system
- Graphical, clear presentation of the parking system
- Checking and controlling of the devices
- Functional alarm message reporting with direct access to detailed information
- Administering customer and card data and issuing various types of tickets
- Tariff module for the convenient design of car park tariffs
- Web-based presentation of business figures



### Basis Edition

Controlling and administering functions for the entire system and for car parks and individual devices

Clear presentation of the car park situation

Display of all alarm and error messages incl. logging and evaluating

Personnel, customer and card administration

- Clear presentation of customer and card data
- Rapid processing of customer and card data
- Complex search functions

Issue of the following types of tickets and cards:

- Short term parker ticket
- Season parker card and debit card
- Function card
- Congress ticket
- One-use ticket
- Lost ticket

Simple and clear creation of card and ticket properties

“Producing” (issuing a card) and “creating” (producing customer-card linkage)

Tariff module for car park-specific tariff configuration

- Tariff lists
- Weekday-dependent tariffs
- Time-dependent tariffs (e.g. day/night)
- Definition of maximum and fixed amounts

Integrated browser for web-based presentation of key business data:

- Cash book
- Key operating report
- Protocols
- Occupancy report

User authorisation as protection against unauthorised access, user-dependent rights management

Remote maintenance via ISDN modem or VPN without negative effects on the current operation

### Options

Various modules for extending the functional scope of the Basis Edition

### System requirements software

Operating system: Microsoft Windows XP with Internet Explorer version 5.5. or later

### System requirements hardware

Minimum:  
Processor: Intel® Pentium® 4  
Clock frequency: 3 GHz  
Internal memory: 1 GB  
Graphics card: min. 1024x768 pixelTrue colour  
Hard drive: 80 GB

## PM ABACUS APPLICATION

WinOperate software module	Basis-Edition	Premium-Edition	Individual option available
<b>Monitoring and controlling the parking system and devices</b>	•	•	
<b>Parking swindler detection</b> (anti pass-back), system-wide recognition of detected parking swindler tickets to all the devices	•	•	
<b>Season parker processing</b> , creating/producing cards, renewing at APS, MPS, DBS	•	•	
Credited season parkers	•	•	
Customer-related counting for limiting the simultaneous utilisation of season parker cards		•	•
<b>Debit card processing</b> , creating/producing cards, additional payment (Partly) charging debit cards at APS or MPS	•	•	•
<b>Congress tickets</b> , creating/producing cards, additional payment	•	•	
<b>Value/Time cheque processing</b> , payment with one or several value/time cheques as additional insert card *		•	•
<b>Function card set</b> , personalised cards for activating functions, renewal at DBS	•	•	
<b>Lost ticket</b> , creation at APS and MPS *	•	•	
Releasing/Blocking at APS via WinOperate *		•	•
Releasing at APS via WinOperate with the price *		•	•
<b>One-use ticket</b> at MPS	•	•	
<b>Prepaid ticket</b> at MPS	•	•	
<b>Theatre tariff</b> , for the payment of a short term parker ticket for events immediately after entering the car park			•
<b>Hotel ticket</b> , for recoding a short term parker ticket as a congress ticket, with special tariff			•
<b>Replacement ticket</b> , creation directly at MPS	•	•	
Creation at APS via WinOperate		•	•
<b>Special income</b> at MPS	•	•	
<b>Special tariffs</b> at MPS		•	•
<b>Tariff switch card</b> , additional insert card for switching the tariff to another short term parker tariff *			•
<b>Key business data</b> , cash book, key operating report, occupancy report, technical lists (alarms, system and device status)	•	•	
Throughput statistics		•	•
Time slot statistics		•	•
Turnover statistics (turnover according to payment type)		•	•
Debit card balance		•	•
<b>Ticket tracking</b> , for tracking individual parking procedures		•	•
<b>Credit card processing CC/EC *</b>			
Payment of the credit/ec card at EXT, APS, MPS		•	•
Utilisation of the credit/ec card as season parker card		•	•
Utilisation of the credit/ec card as short term parker ticket		•	•
Provision of a country-specific accounting file for CC/EC or online verification of CC/EC		•	•
<b>Proximity card processing (RFID smartcard) *</b>			•
<b>Hands-free card processing (Easy-Move) *</b>	•	•	
<b>Tariff module</b> , for car park-specific tariff configuration of tariff lists, limits, flat rates. Including tariff test module	•	•	
Public holiday tariffs		•	•
Early hour		•	•
Early bird		•	•
<b>Export/Import of customer and card data</b>		•	•
<b>PiP function</b> , function "car park within a car park"		•	•
<b>Connection to parking guidance systems</b>			•

\* Some functions require special hardware